

TIME RECEIVED
April 25, 2008 4:02:57 PM CDT

REMOTE CSID
6082770814

DURATION
58 PAGES
1

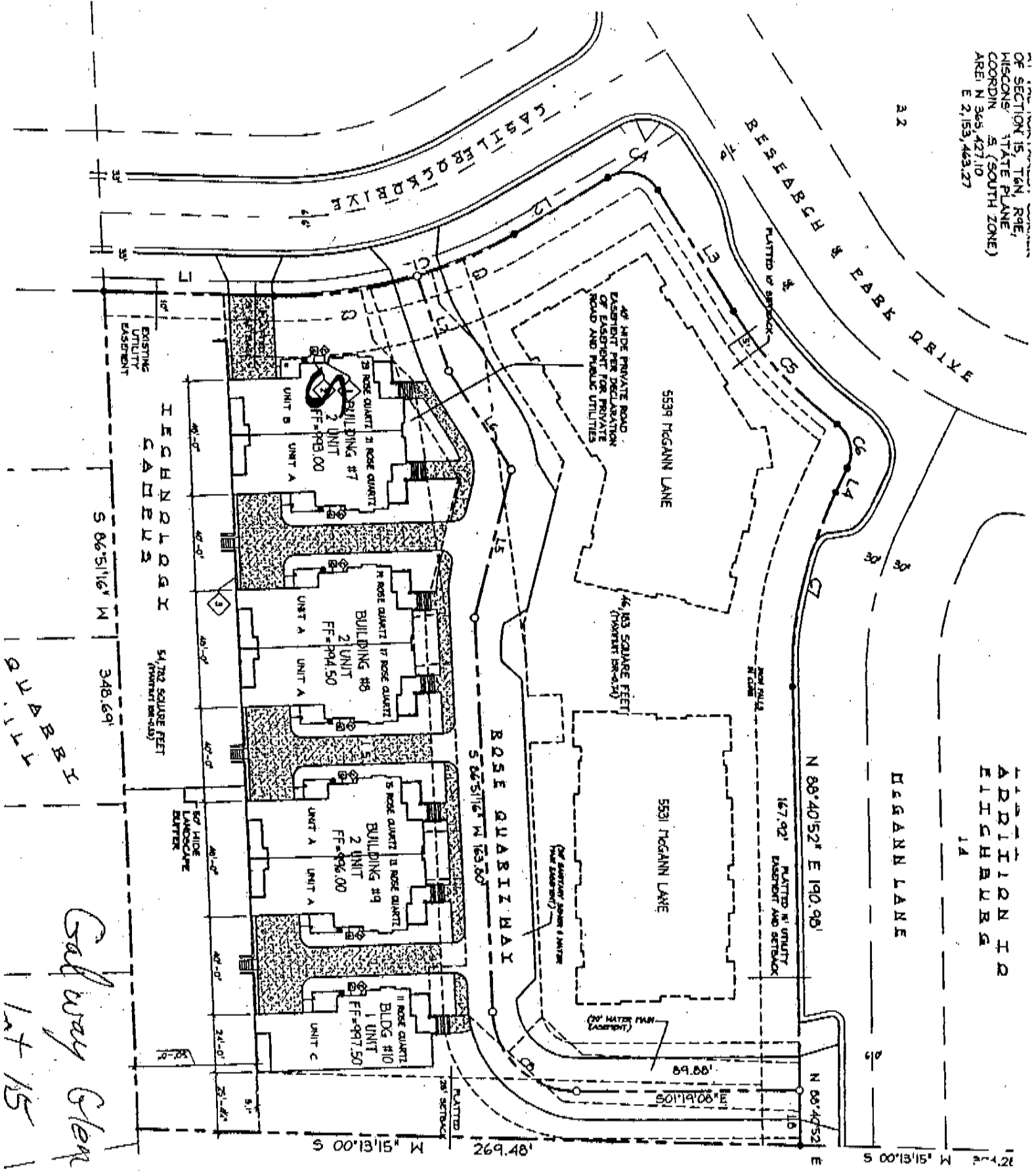
STATUS
Received

04/25/2008 15:54 6082770814

GALWAY GRE

PAGE 01

SECTION 15, T4N, R9E,
MUSKOGEE COUNTY, ALABAMA
STATE PLANE
COORDINATE SYSTEM
AREA: N 365,427.10
E 2,153,463.27



QUALITY
Galway Glen
Lot 15

GRID NORTH
BEARINGS REFERENCED TO THE NORTH
LINE OF THE NW 1/4 OF SECTION 15

FOUND ALPHABETICALLY AT THE NORTH OF SECTION 15, MUSKOGEE COUNTY, ALABAMA
PRIVATE DRIVE DECLARATION DRIVE AND P... NOV. 29, 2004

ADDITIONAL
EASEMENTS
14

MEGANN LANE

N 88°40'52" E 190.96'

167.92' PLATTED 1/2 UNIT EASEMENT AND SETBACK

5539 MEGANN LANE

163 SQUARE FEET (TWO UNIT SETBACK)

ROSE QUARRY BAY

S 86°51'16" W 163.50'

S 00°13'15" W 269.48'

50' HIDE LANDSCAPE BUFFER

54,700 SQUARE FEET (TWO UNIT SETBACK)

S 86°51'16" W 348.69'

EXISTING UTILITY EASEMENT

40' HIDE PRIVATE ROAD EASEMENT PER DEED ABANDON OF EASEMENT FOR PRIVATE ROAD AND PUBLIC UTILITIES

5539 MEGANN LANE

RESEARCH PARK DRIVE

CASIL BROCK DRIVE

3.2